



Products Show



EE Dipped Conveyor Belting Fabric





YUSHENG ENTERPRISE LIMITED

COMPANY PROFILE

YuSheng Enterprise Limited established in 2001, committed to rubber industry raw materials production and sales for more than 20 years.

After years of development, Yusheng has become a professional supplier of raw materials of rubber products, selling and serving tire and rubber products manufacturers in Europe, South America, Southeast Asia, India, Pakistan, the Middle East and other regions.

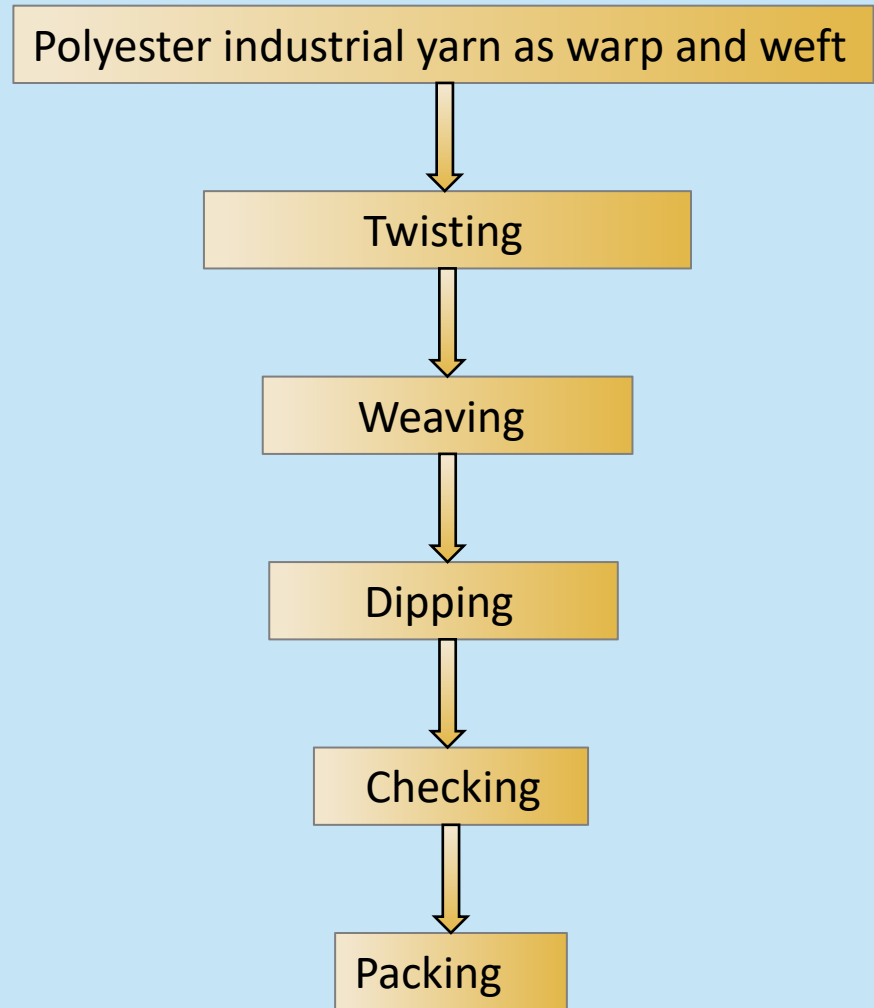
Yusheng is having more than 160+ stable and long-term manufacturing bases, which can provide one-stop raw material services for manufacturers in rubber industry. We sincerely invite rubber professionals from all over the world to join our global supply chain service system and become our partner to achieve win-win development.



Email: jonsen@yushengmax.com **Mob.:**+86 13963602511
Add.: 6F Dong Sheng Plaza Wei Fang City, Shan Dong Province, China.
Website: www.yushengmax.com

EE CONVEYOR BELTING FABRIC

Production Process



Email: jonsen@yushengmax.com Mob.: +86 13963602511

Add.: 6F Dong Sheng Plaza Wei Fang City, Shan Dong Province, China.

Website: www.yushengmax.com

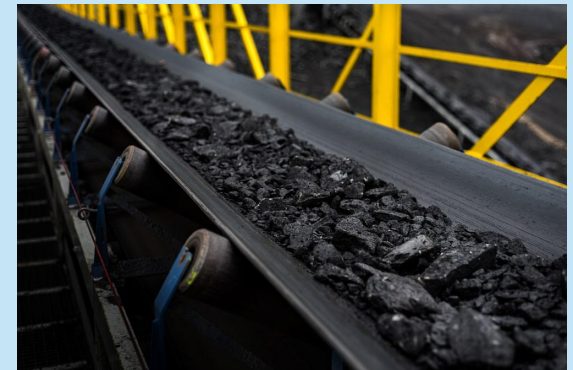
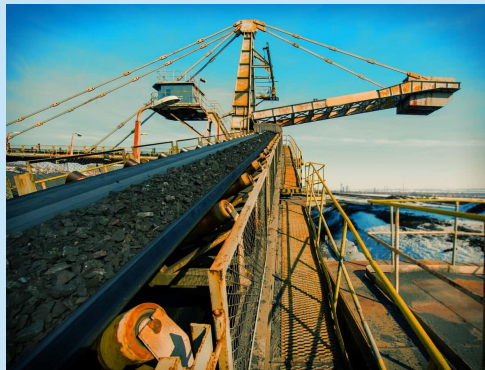
EE CONVEYOR BELTING FABRIC

Characteristics

- good Dimensional Stability
- High strength
- Low heat shrinkage
- High adhesion, etc.

Applications

Used as reinforcement material of conveyor belts in coal mine industrial, power plant and cement plant etc.



EE CONVEYOR BELTING FABRIC

Specification (EE-80、EE-100、EE-125、EE-150、EE-200、EE-250、EE-300、EE-350 etc.)

The main physical properties of the fabric

NO.	ITEM	Unit	EE -80		EE -100		EE -125		EE -135(150B)	
			Warp	Weft	Warp	Weft	Warp	Weft	Warp	Weft
1	Material		Polyester	Polyester	Polyester	Polyester	Polyester	Polyester	Polyester	Polyester
2	Ave breaking strength (min)	N\cm	1200	500	1350	500	1600	600	1850	650
3	Elongation at 10% load (max)	%	2.5	/	2.5	/	2.5	/	2.5	/
4	Breaking Elongation	%	≥16	≤45	≥18	≤45	≥18	≤45	≥18	≤45
5	Hot air shrinkage 150C×30min (max)	%	2.5	0.5	2.5	0.5	2.5	0.5	2.5	0.5
6	Adhesion (min)	N\2.54cm	196		196		196		196	
7	Weight per square metre	g\m2	320±10		365±15		420±20		470±20	
8	Thickness	mm	0.45±0.05		0.5±0.05		0.55±0.05		0.70±0.05	
9	Crimps	%	3.5±1		4.0±1		4.5±1		4.5±1	
10	Width	mm	600-2200		600-2200		600-2200		600-2200	

Note: Special spec. can be customized by the requirement/sample from customers.

EE CONVEYOR BELTING FABRIC

NO.	ITEM	Unit	EE-150(160)		EE -175(200B)		EE -200		EE -235(250A)	
			Warp	Weft	Warp	Warp	Warp	Weft	Warp	Weft
1	Material		Polyester	Polyester	Polyester	Polyester	Polyester	Polyester	Polyester	Polyester
2	Ave breaking strength (min)	N\Cm	2050	650	2300	750	2500	800	2900	850
3	Elongation at 10% load (max)	%	2.5	/	2.5	/	2.5		2.5	
4	Breaking Elongation	%	≥18	≤45	≥18	≤45	≥18	≤50	≥20	≤50
5	Hot air shrinkage 150C×30min (max)	%	2.5	0.5	2.5	2.0	2.0	0.5	2.0	0.5
6	Adhension (min)	N\2.54cm	196		196		196		196	
7	Weight per square metre	g\m2	520±20		580±20		620±20		730±25	
8	Thickness	mm	0.78±0.05		0.85±0.10		0.9±0.05		1.05±0.05	
9	Crimps	%	4.5±1		5.0±1		6.0±1		6.5±1	
10	Width	mm	600-2200		600-2200		600-2250		600-2250	

Note: Special spec. can be customized by the requirement/sample from customers.

EE CONVEYOR BELTING FABRIC

NO.	ITEM	Unit	EE-250		EE -275		EE -300		EE -350	
			Warp	Weft	Warp	Weft	Warp	Weft	Warp	Weft
1	Material		Polyester	Polyester	Polyester	Polyester	Polyester	Polyester	Polyester	Polyester
2	Ave breaking strength (min)	N\Cm	3000	850	3200	900	3350	900	3750	950
3	Elongation at 10% load (max)	%	2.5	/	2.5	/	2.5	/	2.5	/
4	Breaking Elongation	%	≥20	≤50	≥20	≤50	≥20	≤50	≥20	≤50
5	Hot air shrinkage 150C×30min (max)	%	2.0	0.5	2.0	0.5	2.0	0.5	2.0	0.5
6	Adhesion (min)	N\2.54cm	196		196		196		196	
7	Weight per square metre	g\m2	780±30		830±30		880±30		950±30	
8	Thickness	mm	1.1±0.05		1.15±0.05		1.2±0.05		1.25±0.05	
9	Crimps	%	≥6.5		≥6.5		≥6.5		≥6.5	
10	Width	mm	600-2250		600-2200		600-2250		600-2250	

Note: Special spec. can be customized by the requirement/sample from customers.

EE CONVEYOR BELTING FABRIC

Packing:

- Packing In rolls
- Standard packing materials and methods





Trustworthy Partner of Rubber Raw Materials

Email: jonsen@yushengmax.com Mob.:+86 13963602511

Add.: 6F Dong Sheng Plaza Wei Fang City, Shan Dong Province, China.

Website: www.yushengmax.com